

SP ProLine® 100

Straightness Starter Package



SP ProLine® 100

Content of Straightness Starter Package

T250 Laser Source – with mounting adapter and power supply (SP T250-P)



The T250 Laser is a highly developed Laser source that is very small in dimension, which is a great help when measuring where there's not much space! The T250 Laser possesses a beam of outstanding quality.

R540 Laser Receiver with a 2-Axis-PSD Technology and Bluetooth (BG 830440/1)



The R540 is a very accurate and yet robust Laser Position Sensor especially developed for measuring linearity. The R540 has a downwardly offset detector lens enabling measurement directly above the object. This minimizes offset error due to tilt or roll. Connection with the Measurement PC for recording and display purposes is over Bluetooth. The R540 is powered by a commonly used Li-Ion Pack (externally rechargeable) ensuring continual measurement availability. Combined with the ProLine software and a Bluetooth distance measurement meter, you are equipped to measure the x-,y- and z-axes simultaneously.

2x Block Magnet complete with a cross-bridge (BG 830315)



Block magnet (BT 943105) complete with a cross-bridge. This enables the mounting of a R540 Sensor or T250 laser with adapter BG 830780. Available attachment rods: BT 948155, BT 948156, BT 948157.

4x Rod 150 mm length (BT 948157)

Attachment rod: 10 mm diameter, M8 thread enabling fixture of a sensor.



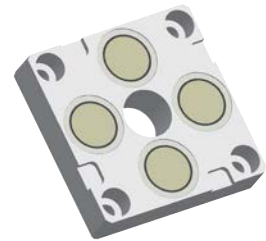
2x Mounting Adapter T250, R280, R310, R540 (BG 830780)

This adapter is of great practical help for measuring with the T250 laser or the R540, R280 and R310 receiver. It allows to adjust the height of the laser or sensor by moving it on the attachment rods mounted on the block magnet complete with a cross-bridge.



Magnetic Attachment for T250 (BG 830790)

Magnetic attachment for T250 Laser. The attachment can be mounted under, in front of or behind the T250. Dimensions: 60 x 60 x 14.5 mm.

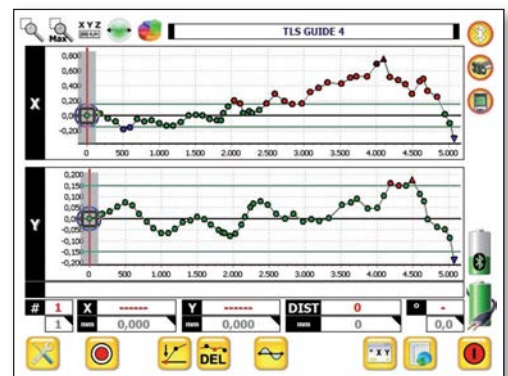


ProLine V4 Software with starter license (SW 200103)

ProLine V4 – Alignment software for linear guides

Easy measurement and professional analysis

- Automatically connection management, wireless via Bluetooth
- Measurement of x- and y-axis simultaneously
- Automatically detection of the distance by Bluetooth Disto(TM)
- Manually or automatically measurement
- Zeroing of two points or ISO 1101 / ISO 230
- Adjustment with live values
- Data view with all values and calculations
- One click report containing all graphics and data in pdf format
- Easy to use touchscreen software



Laser kit Case (BG 990114)



Rugged Case with special foam inlay.
Dimension: 487 x 386 x 185 mm.

Please contact us for more information.



 **Status Pro**
maschinenmesstechnik

Status Pro Maschinenmesstechnik GmbH
Mausegatt 19 · D-44866 Bochum
Phone: + 49 (0) 2327 - 9881 - 0
Fax: + 49 (0) 2327 - 9881 - 81
www.statuspro.com · info@statuspro.com

Distributor